

Neuronode10 series are various types of multichannel Si brain probe. All and any probe parameters, such as dimension, length, thickness, electrode site location, shape and number, shank number, etc. are all customizable to meet specific experiment requirements.

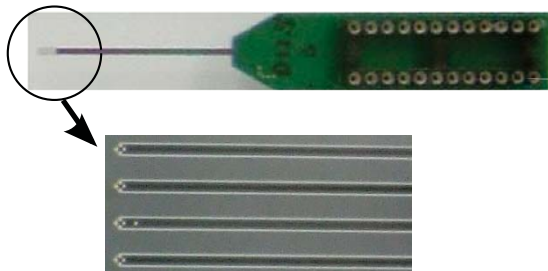
Substrate material : Silicon
Probe length : 5, 10, 20, 33 mm or Custom
Probe width : 110 - 350 μm
Probe thickness : 40 μm
Probe shaft back side : Round shape
Probe shaft shape : Straight tapering or Tiered tapering
Probe tip shape : Sharp-pointed
Shank number : 1, 4, 8 or Custom
Shank space : 100, 200, 500 μm or Custom
Electrode site material : Ir (Pt or Au optional)
Site number : 4, 8, 16, 32, 64 ch or Custom
Site diameter : 10, 15, 20, 30 μm or Custom
Site space : 50, 100, 200 μm or Custom
Site layout : Laminar, Tetrode, 2-rows, 3-rows, edgeways, or Custom
Package : Acute / Chronic "Major system vendors compatible" or Custom



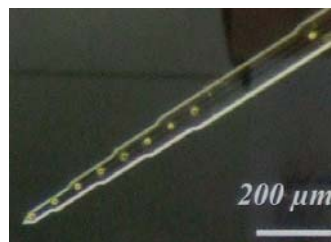
10 mm / 1 shank / 16 ch / Acute



5 mm / 1 shank / 16 ch / Custom Acute



33 mm / 4 shank / 32 ch / Acute



Laminar site layout
Tiered tapering



Edgeways site layout
Straight tapering

Tohoku-MicroTec Co., Ltd. (<http://www.t-microtec.com>)

Japan Headquarter

6-6-40 Aza-Aoba Suite 203, Aramaki, Aoba-ku, Sendai, 980-8579 Japan

Phone: +81-22-398-6264, Fax: +81-22-398-6265

info@t-microtec.com

US Office

135 Rio Robles East Unit 160, San Jose, CA 95134 USA

Phone: 408-464-7972

hasegawa@t-microtec.com